



در این مقاله به بررسی روش‌های مختلف برای پیدا کردن دستگاه‌های متصل به شبکه وای فای پرداخته می‌شود. این روش‌ها می‌تواند برای تشخیص دستگاه‌های غیرمجاز که به شبکه شما متصل شده‌اند، بسیار مفید باشد. همچنین می‌تواند به شما کمک کند تا دستگاه‌های قدیمی یا بی‌استفاده را از شبکه خود حذف کنید.

روش‌های مختلفی برای پیدا کردن دستگاه‌های متصل به شبکه وای فای وجود دارد. در این مقاله به بررسی سه روش اصلی پرداخته می‌شود: استفاده از ابزارهای نرم‌افزاری، استفاده از دستورات ترمینال و استفاده از ابزارهای سخت‌افزاری.

## روش اول: استفاده از ابزارهای نرم‌افزاری

یکی از ساده‌ترین روش‌ها برای پیدا کردن دستگاه‌های متصل به شبکه وای فای، استفاده از ابزارهای نرم‌افزاری است. ابزار [Wireless Network Watcher](#) یکی از بهترین ابزارها در این زمینه است. این ابزار می‌تواند به شما کمک کند تا دستگاه‌های متصل به شبکه خود را به راحتی پیدا کنید و نام آنها را مشاهده کنید.

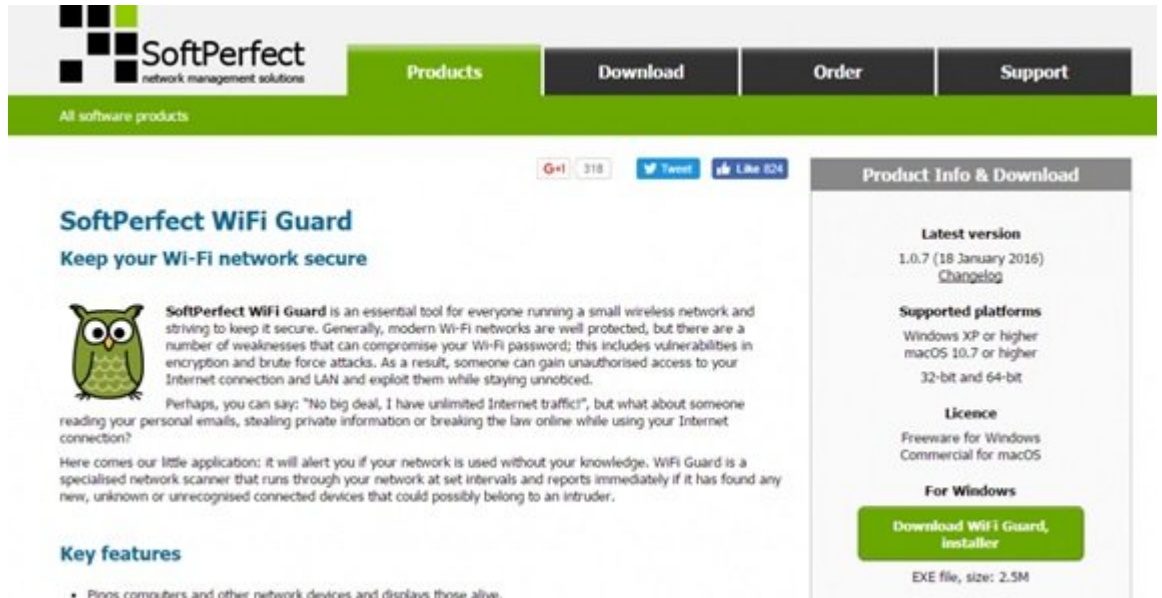




# Guard

SoftPerfect WiFi Guard is a network scanner that runs through your network at set intervals and reports immediately if it has found any new, unknown or unrecognised connected devices that could possibly belong to an intruder. It is an essential tool for everyone running a small wireless network and striving to keep it secure. Generally, modern Wi-Fi networks are well protected, but there are a number of weaknesses that can compromise your Wi-Fi password; this includes vulnerabilities in encryption and brute force attacks. As a result, someone can gain unauthorised access to your Internet connection and LAN and exploit them while staying unnoticed.

SoftPerfect WiFi Guard is a specialised network scanner that runs through your network at set intervals and reports immediately if it has found any new, unknown or unrecognised connected devices that could possibly belong to an intruder.

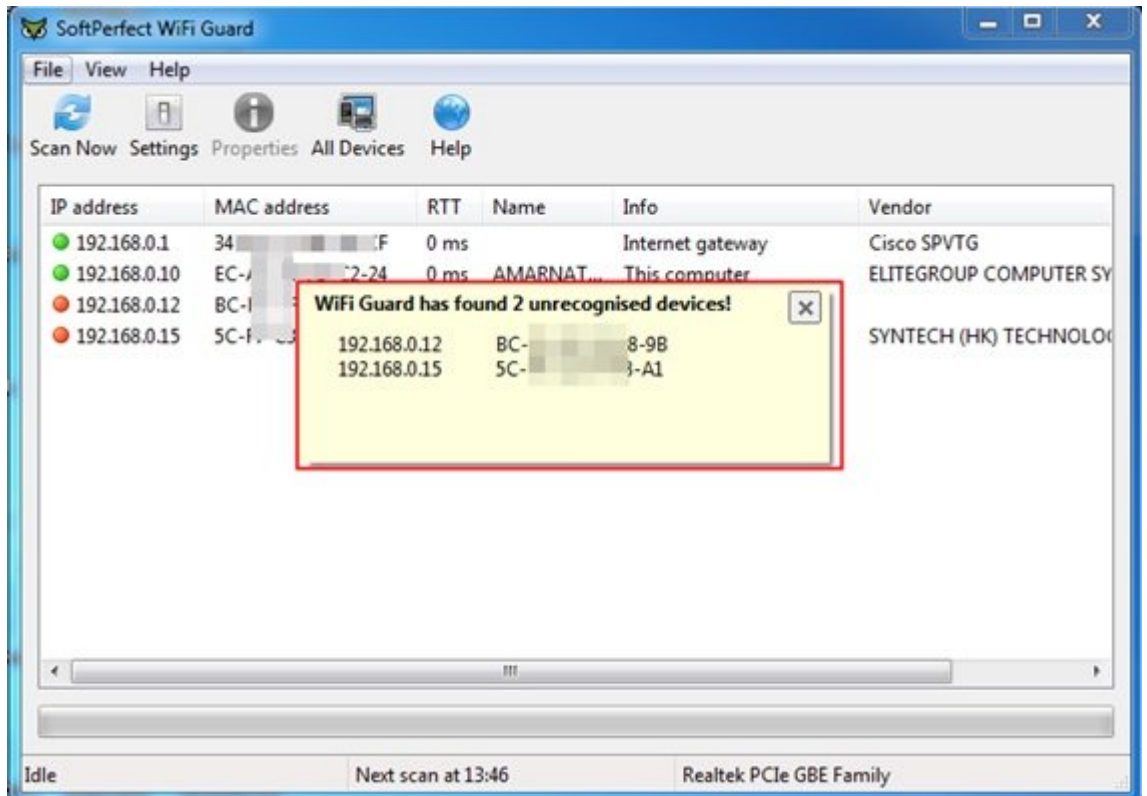


Settings File



UI Behaviour



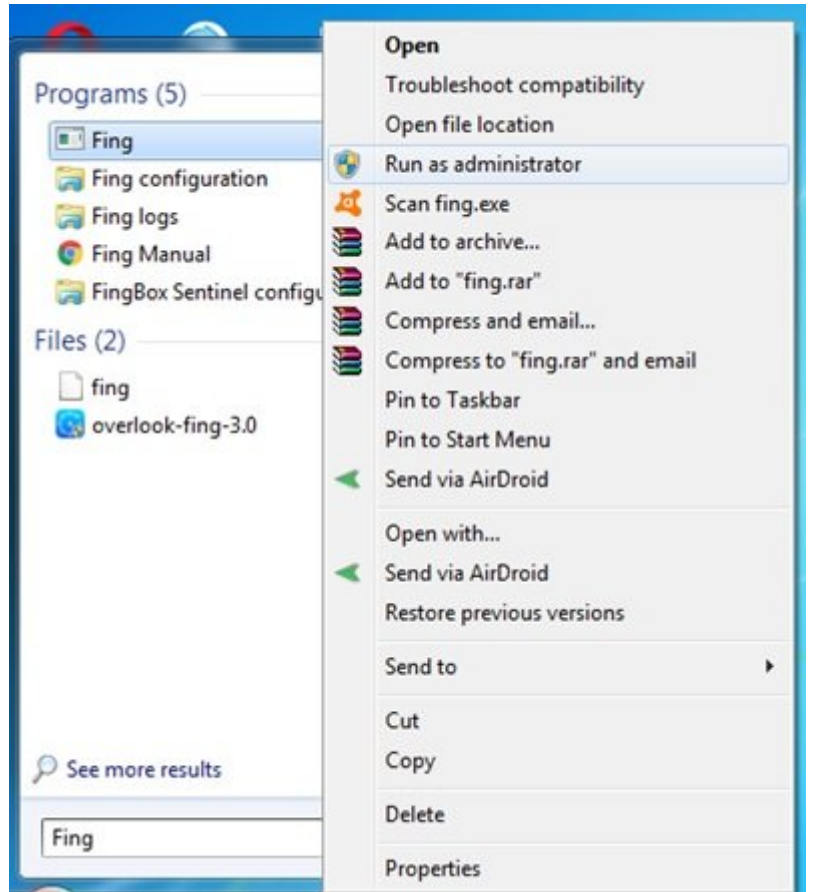


## Fing IP Network Scanner

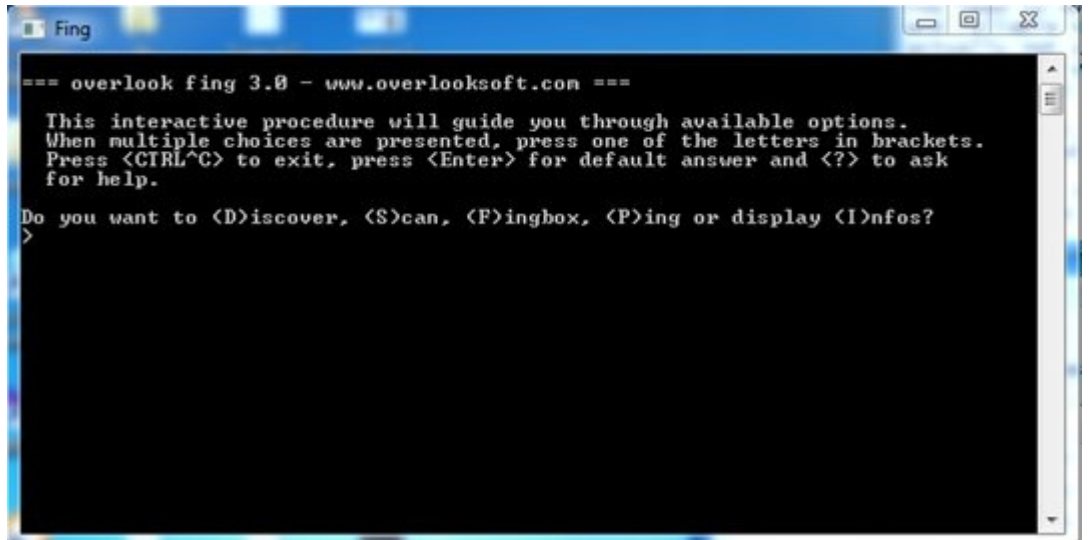
Fing IP Network Scanner is a powerful network scanner that can identify devices on your network. It provides detailed information about each device, including its IP address, MAC address, and vendor. Fing IP Network Scanner is a free software that can be used on Windows, Mac, and Linux. It is a powerful tool for network administrators and security professionals. It can help you identify unauthorized devices on your network and take action to protect your network. Fing IP Network Scanner is a free software that can be used on Windows, Mac, and Linux. It is a powerful tool for network administrators and security professionals. It can help you identify unauthorized devices on your network and take action to protect your network.

Windows- IP Network Scanner is a free software that can be used on Windows. It is a powerful tool for network administrators and security professionals. It can help you identify unauthorized devices on your network and take action to protect your network. Fing.io is a free software that can be used on Windows, Mac, and Linux. It is a powerful tool for network administrators and security professionals. It can help you identify unauthorized devices on your network and take action to protect your network.

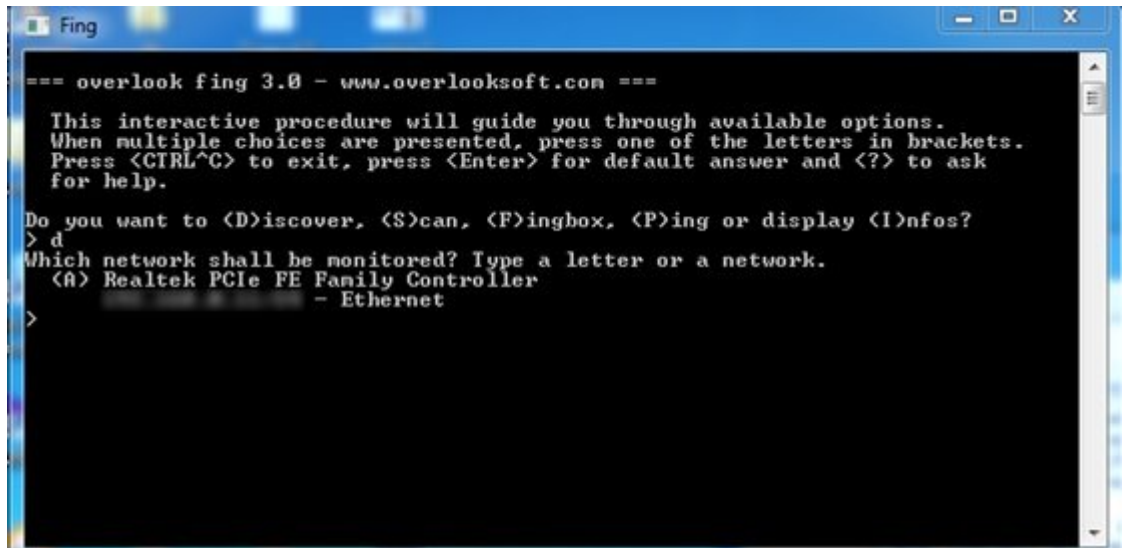
Fing is a free software that can be used on Windows, Mac, and Linux. It is a powerful tool for network administrators and security professionals. It can help you identify unauthorized devices on your network and take action to protect your network. Run as administrator is a free software that can be used on Windows. It is a powerful tool for network administrators and security professionals. It can help you identify unauthorized devices on your network and take action to protect your network.



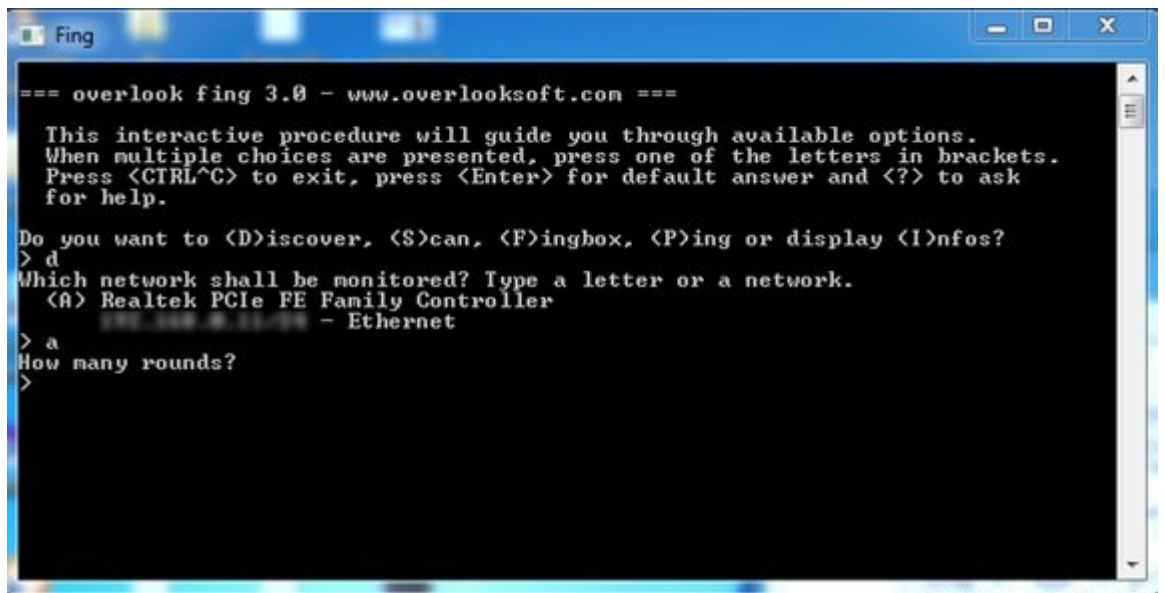
Discover is a tool that can be used to discover the IP addresses of devices on a network. It is a command-line tool that can be used to scan a network for devices and their IP addresses. It is a useful tool for network administrators and security professionals.



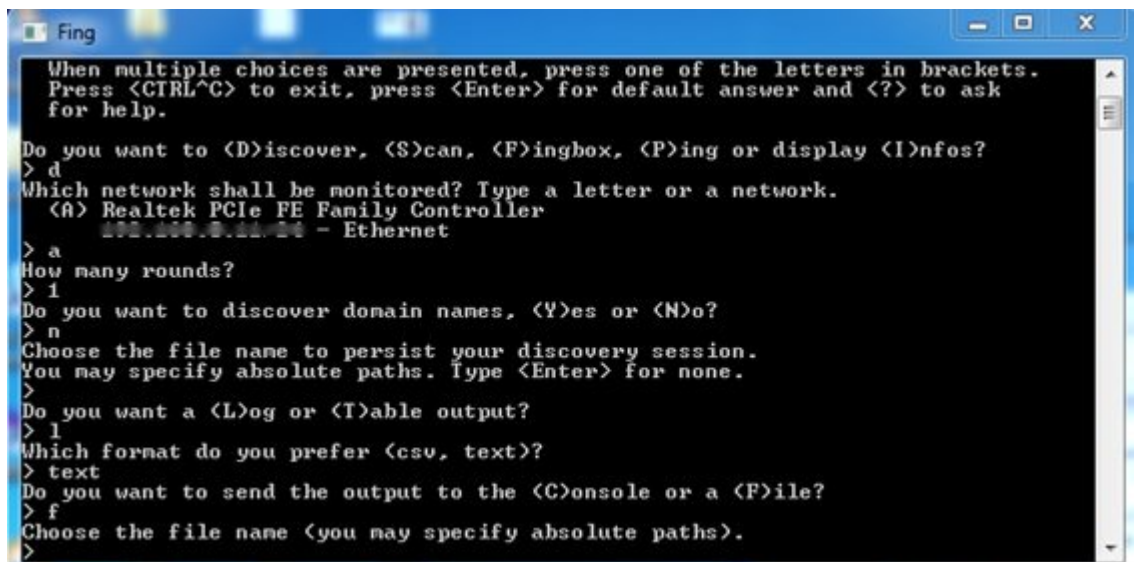
The Fing application is a network discovery tool that can be used to scan a network for devices and their IP addresses. It is a command-line tool that can be used to scan a network for devices and their IP addresses. It is a useful tool for network administrators and security professionals.



.0000 0000 00 1 0000 .0000 000000 00000 000000 000 000000 00 0000 00 000000 0000 0000 000000



00000 0000 000 00000000 0000 000000 0000 00 0000 0000 00 0000000 00 0000000 0000000 000000 0000 000000  
00000000 ... 00000000 000000 00 0000000000 00 0000 000000 000000 0000 00 00 0000 0000000000 0000  
0000000000







%D9%BE%DB%8C%D8%AF%D8%A7-%DA%A9%D9%86%DB%8C%D9%85%D8%9F