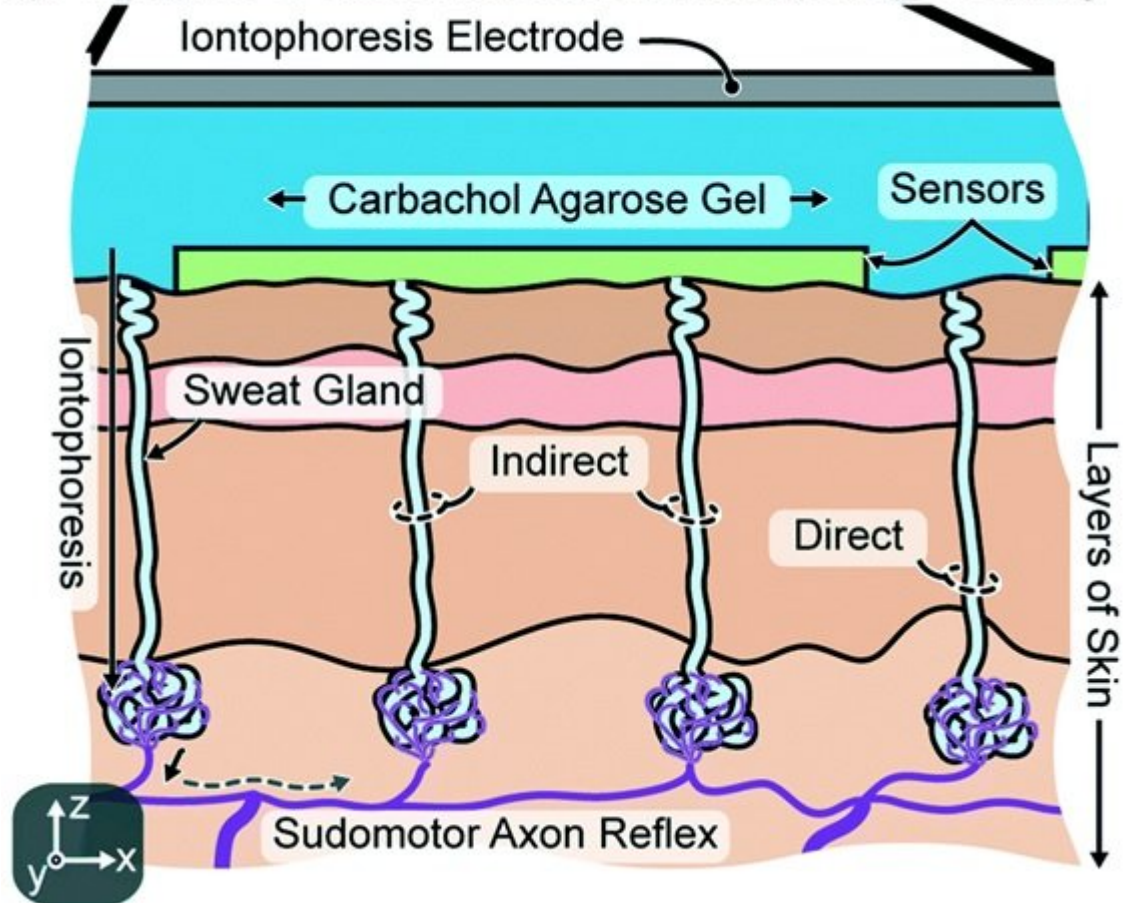


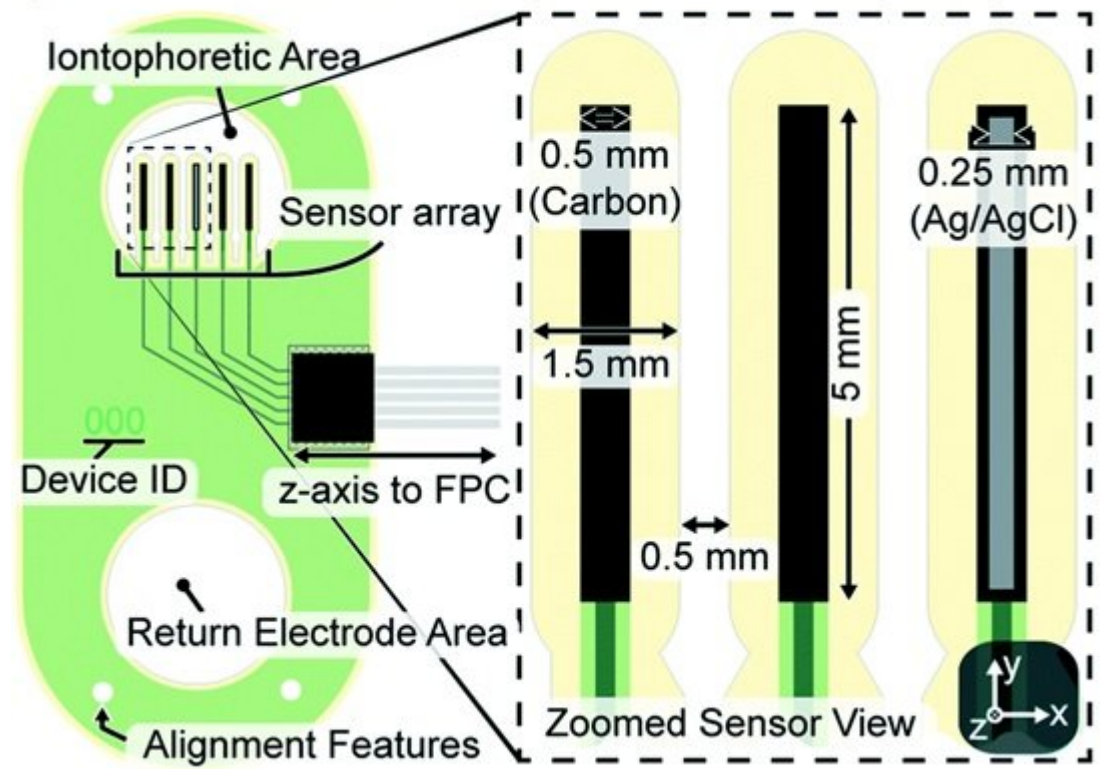
This figure illustrates the experimental setup for studying the effects of Carbachol on the device. The setup includes Carbachol Gels, Iontophoresis Electrodes, and the Device. The Carbachol Gels are used to deliver Carbachol to the device. The Iontophoresis Electrodes are used to deliver current to the device. The Device is a green, oval-shaped device with a circular opening and several thin metal electrodes protruding from it. The device is connected to the Iontophoresis Electrodes.

## b) Principles of sudomotor axon reflex (SAR) sweating



The diagram illustrates the principles of sudomotor axon reflex (SAR) sweating. It shows a cross-section of the skin layers, including the Iontophoresis Electrode, Carbachol Agarose Gel, Sensors, and the Layers of Skin. The diagram illustrates the Iontophoresis process, the Sweat Gland, and the Sudomotor Axon Reflex pathway, which is divided into Indirect and Direct pathways. A 3D coordinate system (x, y, z) is shown at the bottom left.

c) Detailed device structure (sensor/skin side upward)



..... . .... Eccrine Systems ..... ..  
 ..... ..  
 ..... ..  
 ..... ..

:.....  
 .....  
 :.....  
 .....  
 :.....  
 19:05 - 16/05/1396  
 :.....  
 ..... - ..... - ..... - ..... - .....

.....  
<https://www.shabakeh-mag.com/information-feature/9085/%D8%A7%DB%8C%D9%86-%D8%A7%D8%B3%E2%80%8C%DA%AF%D8%B1-%D8%A7%D8%B7%D9%84%D8%A7%D8%B9%D8%A7%D8%AA-%D8%AD%DB%8C%D8%A7%D8%AA%DB%8C-%D8%B1%D8%A7-%D8%A7%D8%B2-%D8%AF%D8%B1%D9%88%D9%86-%D8%B9%D8%B1%D9%82-%D8%A7%D9%86%D8%B3%D8%A7%D9%86-%D8%A7%D8%B3%D8%AA%D8%AE%D8%B1%D8%A7%D8%AC-%D9%85%DB%8C%E2%80%8C%DA%A9%D9%86%D8%AF>